



Memorial Sloan Kettering
Cancer Center

October 17—18, 2025 | New York City & Virtually

Thoracic Pathology

COURSE 2025

Co-sponsored by **Memorial Sloan Kettering Cancer Center**
and **Massachusetts General Hospital**

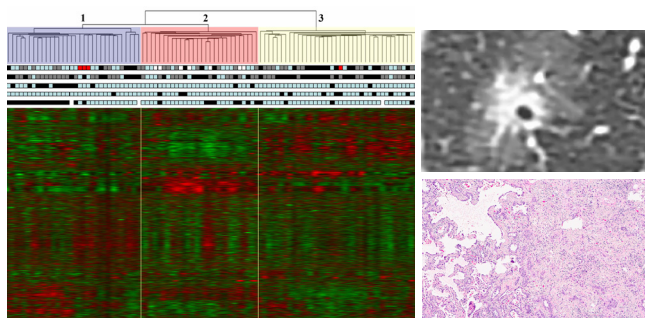
With endorsement from the **Pulmonary Pathology Society**



COURSE OVERVIEW

Co-sponsored by Memorial Sloan Kettering Cancer Center (MSK) and Massachusetts General Hospital (MGH), and endorsed by the Pulmonary Pathology Society (PPS), this course offers a comprehensive review of thoracic pathology with clinical and radiologic correlations.

The program features expert-led lectures, in-depth discussions, and case presentations on thoracic tumors, along with a multidisciplinary session dedicated to non-neoplastic lung diseases. Anticipated changes in the next WHO Classification of Lung Tumors, the 9th Edition TNM Staging Classification, the new 2025 ATS/ERS Classification of Interstitial Pneumonias and Guidelines for Diagnosis of Hypersensitivity Pneumonitis will be presented.



While the majority of faculty are expert lung pathologists, the course also includes presentations from distinguished thoracic clinicians and radiologists. Together, these sessions highlight the importance of a multidisciplinary approach in addressing complex challenges in thoracic disease.



Memorial Sloan Kettering
Cancer Center



Mass General Brigham



HARVARD
MEDICAL SCHOOL



Pulmonary
Pathology
Society

Educational Objectives

At the conclusion of this activity, attendees will be able to:

- Discuss the current concepts in lung, pleural and mediastinal pathology
- Apply clinically relevant advances and technology in molecular pathology of lung cancer
- Describe the importance of correlation between clinical, radiologic and pathologic data in diagnosis and management of interstitial lung disease
- Identify the significance of lung biopsy and multidisciplinary correlation for the diagnosis of non-neoplastic lung disease with a focus on interstitial pneumonias, hypersensitivity pneumonitis and acute lung injury
- Implement the most recent histologic concepts in lung cancer diagnosis and classification including problematic issues related to spiral CT screening
- Apply the differential diagnosis for mediastinal and pleural lesions
- Correlate the usefulness of cytology in pulmonary, pleural and mediastinal diagnoses

Accreditation

Memorial Sloan Kettering Cancer Center is accredited by the Accreditation Council for Continuing Medical Education to provide continuing medical education for physicians.

AMA Credit Designation

Memorial Sloan Kettering Cancer Center designates this live activity for a maximum of 15.50 *AMA PRA Category 1 Credits™*. Physicians should claim only the credit commensurate with the extent of their participation in the activity.

ABPath CC Recognition Statement

This activity will offer 15.50 Lifelong Learning (CME) credit towards the American Board of Pathology's Continuing Certification program.



Target Audience

This course is designed for pathologists, pulmonologists, thoracic surgeons, and radiologists, including residents and fellows in training. Discounted registration is available for specific groups (see registration section for details).

Format and Location

The course will be held at MSK's Zuckerman Research Center on Manhattan's Upper East Side—a vibrant, safe neighborhood with convenient access to New York City's renowned cultural attractions. A virtual attendance option is also available for those who are unable to join us in person.

Post-course Resources

Following the course, registrants will receive access to a syllabus that includes PDF versions and recorded videos of faculty presentations.

COURSE PLANNERS



Course Director

William D. Travis, MD

Director, Thoracic Pathology
Attending, Department of Pathology
and Laboratory Medicine
Memorial Sloan Kettering Cancer Center



Course Director

Mari Mino-Kenudson, MD

Director, Pulmonary Pathology
Pathologist, Massachusetts General Hospital
Professor of Pathology, Harvard Medical School



Course Co-Director

Natasha Rekhtman, MD, PhD

Attending, Department of Pathology
and Laboratory Medicine
Memorial Sloan Kettering Cancer Center



Course Co-Director

Lida P. Hariri, MD, PhD

Assistant Pathologist,
Massachusetts General Hospital
Assistant Professor of Pathology,
Harvard Medical School

COURSE FACULTY



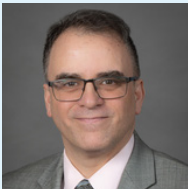
Marina K. Baine, MD, PhD

Assistant Attending
Department of Pathology and Laboratory Medicine
Memorial Sloan Kettering Cancer Center



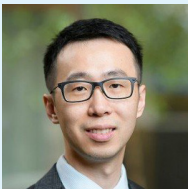
Mary B. Beasley, MD

Professor of Pathology, Molecular and Cell Based Medicine
Mount Sinai School of Medicine



Alain Charles Borczuk, MD

Chairman, Department of Pathology, Long Island Jewish Medical Center
Chairman, Department of Pathology, North Shore University Hospital
Professor, Donald and Barbara Zucker School of Medicine
Hofstra/Northwell



Jason Chang, MD

Assistant Attending
Department of Pathology and Laboratory Medicine
Memorial Sloan Kettering Cancer Center



Sanja Dacic, MD, PhD

Professor of Pathology
Vice Chair and Director of Anatomic Pathology
Yale School of Medicine



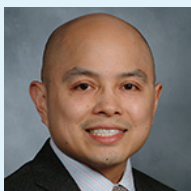
Robert Jeffrey Kaner, MD

Attending Physician
NewYork-Presbyterian Hospital
Professor of Clinical Medicine and Genetic Medicine
Weill Cornell Medical College



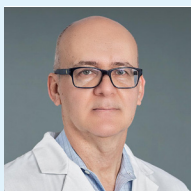
Marc Ladanyi, MD

Chief Attending, Molecular Diagnostics Service
William J. Ruane Chair in Molecular Oncology
Department of Pathology and Laboratory Medicine
Memorial Sloan Kettering Cancer Center



Alan C. Legasto, MD

Assistant Attending Radiologist
NewYork-Presbyterian Hospital
Assistant Professor of Clinical Radiology
Weill Cornell Medical College



Andre L. Moreira, MD, PhD

Professor, Department of Pathology, NYU Grossman School of Medicine
Director, NYU Center for Biospecimen Research and Development
Director, Cardiopulmonary Pathology Fellowship Program
Director, Surgical Pathology
Director, Pulmonary Pathology
NYU Langone



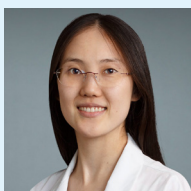
Maelle Saliba, MD

Assistant Professor of Pathology
NewYork-Presbyterian Hospital
Weill Cornell Medical College



Anjali Saqi, MD, MBA

Professor of Pathology & Cell Biology at CUMC
Director, Pulmonary Pathology
NewYork-Presbyterian / Columbia University Irving Medical Center



Fang Zhou, MD

Clinical Associate Professor, Department of Pathology
NYU Grossman School of Medicine
Director, Informatics, Anatomic Pathology
NYU Langone

Memorial Sloan Kettering Cancer Center adheres to the ACCME's Standards for Integrity and Independence in Accredited Continuing Education (CE). Any individuals in a position to control the content of a CE activity, including faculty, planners, reviewers, or others are required to disclose all financial relationships with ineligible companies (commercial interests). All relevant financial relationships is mitigated prior to the commencement of the activity.

COURSE SCHEDULE

Friday | October 17

TIME	SESSION/FACULTY
8:30 AM	In-Person Breakfast & Check-in
9:20 AM	Virtual Sign-on (Zoom)
9:25 AM	Welcome and Introduction William D. Travis, MD
9:30 AM	Anticipated Changes in the 2026 WHO Classification of Lung Cancer William D. Travis, MD
10:00 AM	Most Thought-Provoking Recent Advances in Lung Cancer Molecular Pathology Marc Ladanyi, MD
10:30 AM	Diagnosis of Lung Cancer in Small Biopsies and Cytology Marina K. Baine, MD, PhD
11:00 AM	Immunohistochemistry for Lung Cancer Diagnosis Natasha Rekhtman, MD, PhD
11:30 AM	Q&A and Discussion
11:45 AM	Lunch Break (on your own)
1:00 PM	Neuroendocrine Tumors of the Lung Marina K. Baine, MD, PhD
1:30 PM	Variants of Lung Adenocarcinoma and Squamous Cell Carcinoma Mari Mino-Kenudson, MD
2:00 PM	Interesting Case Presentations MODERATORS: Marina K. Baine, MD, PhD Jason Chang, MD
2:30 PM	Q&A and Discussion
2:45 PM	Break

3:00 PM	Lung Cancer Staging Sanja Dacic, MD, PhD
3:30 PM	Mesothelioma Sanja Dacic, MD, PhD
4:00 PM	Pitfalls in Thoracic Frozen Section Diagnosis Mari Mino-Kenudson, MD
4:30 PM	Q&A and Discussion
4:45 PM	Break
5:00 PM	Mediastinal Tumors Jason Chang, MD
5:30 PM	Molecular Solutions to Challenges in Thoracic Pathology Jason Chang, MD
6:00 PM	Q&A and Discussion
6:15 PM	Closing Remarks William D. Travis, MD

Saturday | October 18

TIME	SESSION/FACULTY
7:15 AM	In-Person Breakfast & Check-in
7:50 AM	Virtual Sign-on (Zoom)
7:55 AM	Opening Remarks William D. Travis, MD
8:00 AM	The New ATS/ERS Classification of Interstitial Pneumonias William D. Travis, MD
8:30 AM	Radiology of Interstitial Pneumonias Alan C. Legasto, MD
9:00 AM	Clinical Features of Interstitial Pneumonias Robert Jeffrey Kaner, MD
9:30 AM	Q&A and Discussion
9:45 AM	Break
10:00 AM	Hypersensitivity Pneumonitis and Small Airway Disorders Mary B. Beasley, MD

10:30 AM	The Pathologist's Role in Multidisciplinary Discussion for ILD Lida P. Hariri, MD, PhD
11:00 AM	Problem Cases in Diagnosis of Interstitial Lung Disease Lida P. Hariri, MD, PhD
11:30 AM	Multidisciplinary Interstitial Lung Disease Case Presentations MODERATORS: Lida P. Hariri, MD, PhD Robert Jeffrey Kaner, MD Alan C. Legasto, MD
12:00 PM	Q&A and Discussion
12:15 PM	Lunch Break (on your own)
1:15 PM	Diagnostic Approach to Acute Lung Injury Mary B. Beasley, MD
1:45 PM	Approach to Lung Biopsy Interpretation Anjali Saqi, MD, MBA
2:15 PM	Granulomatous Lung Disease Anjali Saqi, MD, MBA
2:45 PM	Q&A and Discussion
3:00 PM	Break
3:15 PM	Pulmonary Infections Andre L. Moreira, MD, PhD
3:45 PM	Digital Tools in Thoracic Pathology Fang Zhou, MD
4:15 PM	Atypical Epithelial Proliferations: Reactive vs. Malignant Natasha Rekhtman, MD, PhD
4:45 PM	Mystery Cases Maele Saliba, MD
5:15 PM	Q&A and Discussion
5:30 PM	Closing Remarks William D. Travis, MD

COURSE REGISTRATION

This course offers the option to attend either in person or virtually. Attendance type should be selected during registration.

Register online: msk.org/ThoracicPathology

Early Rates (*available through September 5*)

- Physicians (MDs, DOs, PhDs): \$795
- Pathology Assistants, Fellows, Residents, RNs, and Other Healthcare Providers: \$350
- Industry Professionals*: *not available (general rates apply)*
- MSK Employees: Complimentary

General Rates (*after September 5*)

- Physicians (MDs, DOs, PhDs): \$895
- Pathology Assistants, Fellows, Residents, RNs, and Other Healthcare Providers: \$450
- Industry Professionals*: \$1,550
- MSK Employees: Complimentary

**An “industry professional” is defined as any individual—regardless of profession (e.g., MD, PhD, APP, RN)—who is employed by an ineligible company.*

Registration Discounts: Discounted registration is available for specific groups. If eligible, you will receive further instructions and a promotion code to use during registration.

Meals and Accommodations: Continental breakfast, lunch, and refreshment breaks will be provided to in-person participants. If you have dietary restrictions or require special accommodations to attend in person, please contact us at cme@mskcc.org at least one week prior to the course.

Cancellation Policy: For details regarding our cancellation policy, please visit the course website.



Memorial Sloan Kettering
Cancer Center